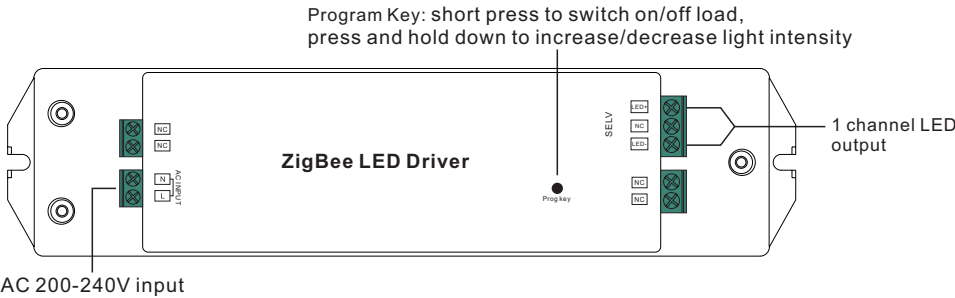


50W ZigBee LED Driver(constant voltage)

70260008



**Important:** Read All Instructions Prior to Installation  
**Function introduction**



**Product Data**

Output	DC Voltage	12V DC		24V DC
	Max. Current	Max. 4.16A		Max. 2.08A
	Rated Power	max. 50W		
Input	Voltage Range	200-240V AC		
	Frequency	50/60Hz		
	Power Factor (Typ.)	> 0.9		
	Efficiency (Typ.)	85% @ 230VAC		88% @ 230VAC
	Input Current	0.27A @ 230VAC		
	Inrush Current (Typ.)	COLD START Max. 2A @ 230VAC		
Protection	Over Current	Yes, auto recovery after fault removed		
	Over Temperature	Yes, auto recovery after fault removed		
Environment	Working Temp.	-20℃ ~ +45℃		
	Max. Case Temp.	85℃ (Ta="45℃")		
	Working Humidity	10% ~ 95% RH non-condensing		
	Storage Temp. & Humidity	-40℃ ~ +80℃, 10% ~ 95% RH		

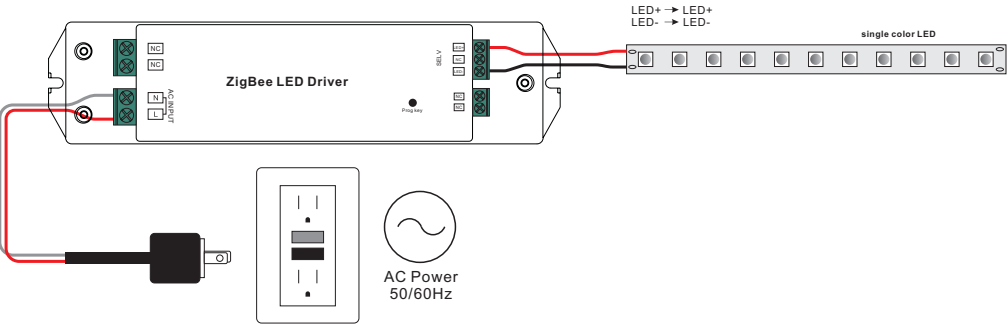
Safety&EMC	Safety Standards	ENEC EN61347-1, EN61347-2-13 approved
	Withstand Voltage	I/P-O/P: 3.75KVAC
	EMC Emission	EN55015, EN61000-3-2, EN61000-3-3
	EMC Immunity	EN61547, EN61000-4-2,3,4,5,6,8,11, surge immunity Line-Line 1KV
Others	MTBF	190400H, MIL-HDBK-217F @ 230VAC at full load and 25℃ ambient temperature
	Dimension	210*50*32mm (L*W*H)

- Dimmable LED driver based on ZigBee 3.0 protocol
- Max. output power 50W total
- 1 channel 12/24V DC constant voltage output
- Class II power supply, full isolated plastic case
- High power factor and efficiency
- Deep and smooth dimming to 0.1%
- Suitable for indoor LED lighting applications
- Enables to control ON/OFF, light intensity connected LED lights
- ZigBee end device that supports Touchlink commissioning
- Can directly pair to a compatible ZigBee remote via Touchlink
- Supports find and bind mode to bind a ZigBee remote
- Supports zigbee green power and can bind max. 20 zigbee green power remotes
- Compatible with universal ZigBee gateway products
- Compatible with universal dim ZigBee remotes
- Waterproof grade: IP20
- 5 years warranty

**Safety & Warnings**

- DO NOT install with power applied to device.
- DO NOT expose the device to moisture.

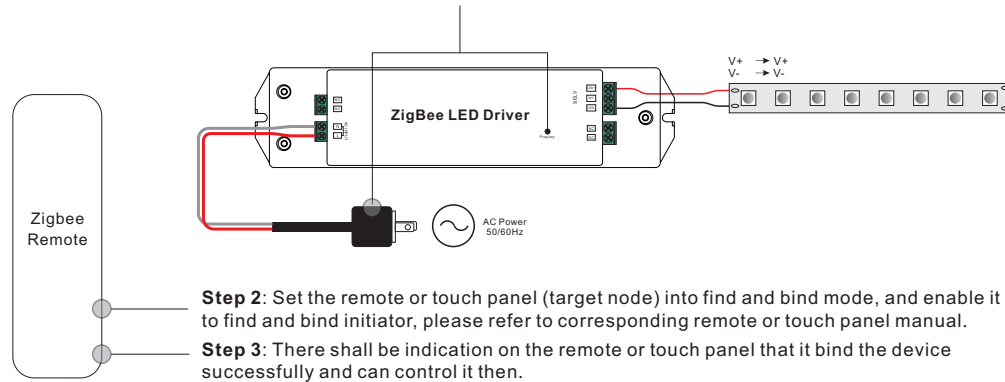
**Wiring Diagram**





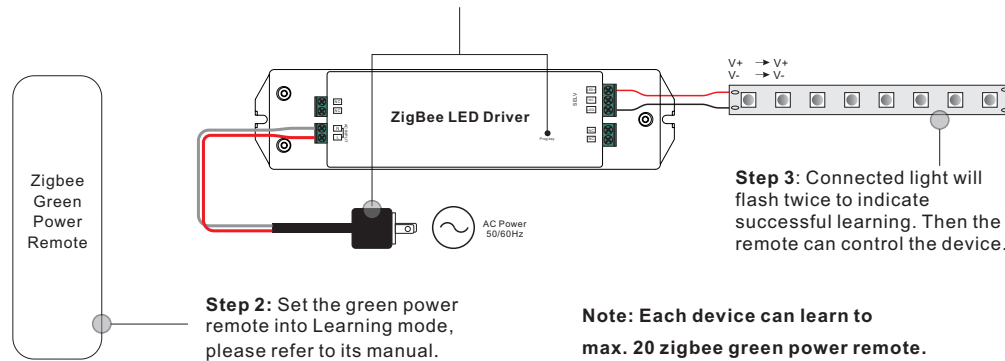
## 8. Find and Bind Mode

**Step 1:** Short press “Prog.” button 3 times (Or re-power on the device (initiator node) 3 times) to start Find and Bind mode (connected light flashes slowly) to find and bind target node, 180 seconds timeout, repeat the operation.



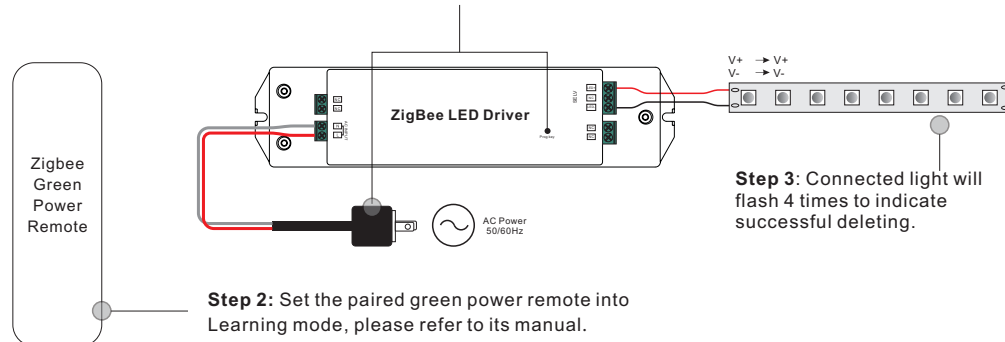
## 9. Learning to a Zigbee Green Power Remote

**Step 1:** Short press “Prog.” button 4 times (Or re-power on the device 4 times) to start Learning mode (connected light flashes twice), 180 seconds timeout, repeat the operation.



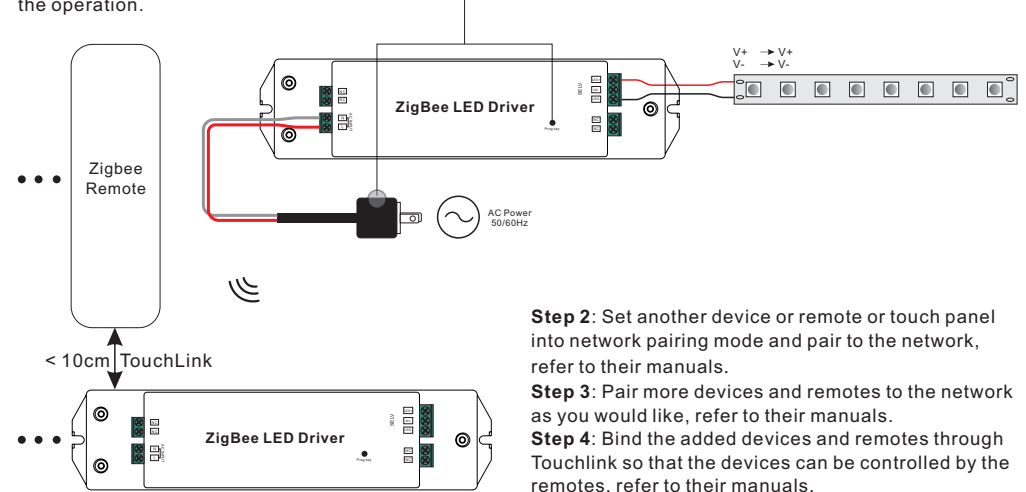
## 10. Delete Learning to a Zigbee Green Power Remote

**Step 1:** Short press “Prog.” button 3 times (Or re-power on the device 3 times) to start delete Learning mode (connected light flashes slowly), 180 seconds timeout, repeat the operation.



## 11. Setup a Zigbee Network & Add Other Devices to the Network (No Coordinator Required)

**Step 1:** Short press “Prog.” button 4 times (Or re-power on the device 4 times) to enable the device to setup a zigbee network (connected light flashes twice) to discover and add other devices, 180 seconds timeout, repeat the operation.



**Note:** 1) Each added device can link and be controlled by max. 30 added remotes.

2) Each added remote can link and control max. 30 added devices.

## 12. ZigBee Clusters the device supports are as follows:

### Input Clusters

- 0x0000: Basic
- 0x0003: Identify
- 0x0004: Groups
- 0x0005: Scenes
- 0x0006: On/off
- 0x0008: Level Control
- 0x0b05: Diagnostics

### Output Clusters

- 0x0019: OTA

## 13. OTA

The device supports firmware updating through OTA, and will acquire new firmware from zigbee controller or hub every 10 minutes automatically.

## Product Dimension

